

Cooperation and Sustainability are pillars for a successful SDI in Sweden



**Peter Wasström, Head of International Services Department
Lantmäteriet - the Swedish Mapping, Cadastral and Land Registration Authority**

What is SDI



- **S**patial **D**ata **I**nfrastructure.
- A standardized way to share and have easy access to spatial data.
- Data is shared using services on the Internet.

Components of a SDI - what is missing?





Cooperation

- Within and between independent organisations.
- Based on common frameworks and regulated in contracts and agreements.
- Without cooperation you have no SDI.

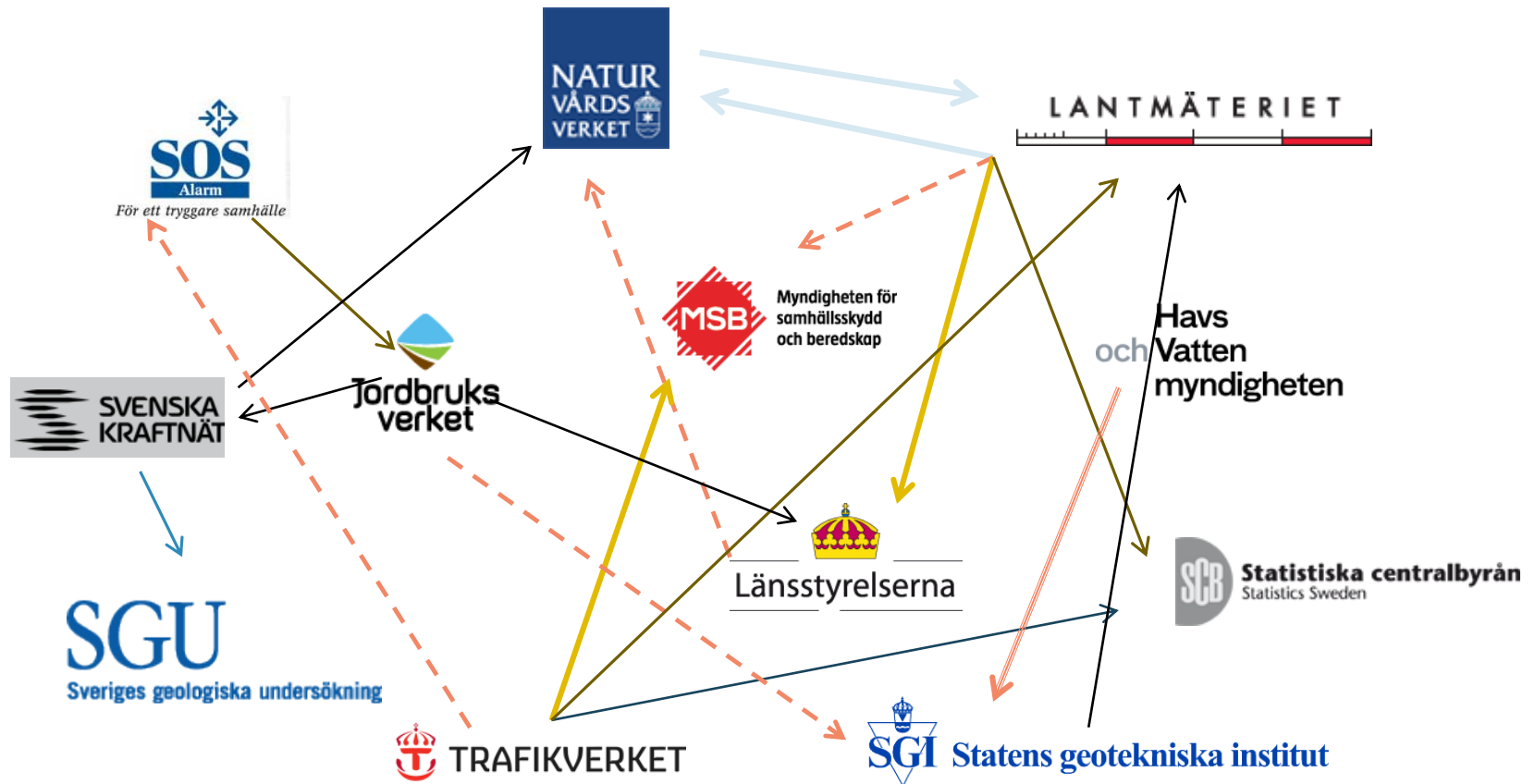


Swedish national cooperation – within Maritime Information

- Swedish National Heritage Board
 - Cultural historic data (ship wrecks)
- The Swedish Mapping, Cadastre and Land Registration Authority
 - Cadastre information, Topography (maps), Elevation, Land cover, Ortho imagery etc.
- Swedish Civil Contingencies Agency
 - Land slide data and other relevant natural risk zones
- County Administration Board and Swedish Environmental Protection Agency
 - Protected sites and other environmental data
- Geological Survey of Sweden
 - Ground water, Soils, Environmental surveys of sediment on the sea floor
- Swedish Transport Administration
 - Transport information such as bridges and connection points to the road/railroad network
- Swedish Metrological and Hydrological Institute
 - Weather conditions, Tide and current information
- Swedish Maritime Administration
 - Bathymetric information, Effects on maritime safety and transport network

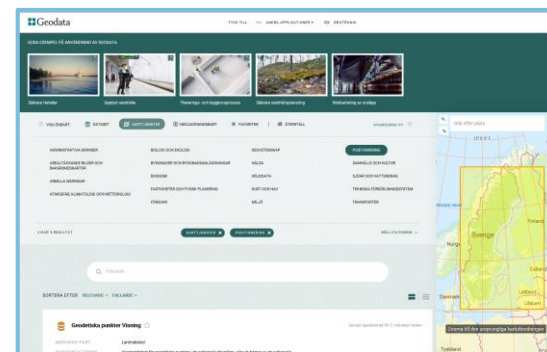
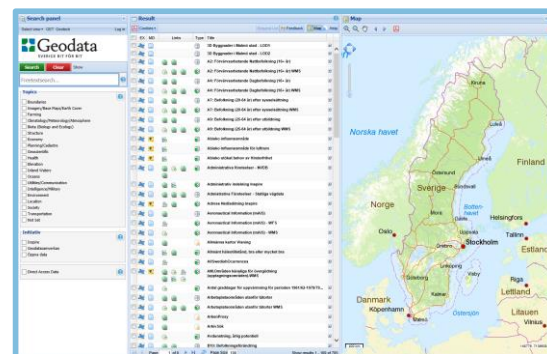


Old school – a complicated cooperation



Data sharing in Sweden today

- Common agreement - pay once get all
- Access via National discovery service (Geodata portal)
- 32 authorities
- 255 municipalities



Lantmäteriet cooperates with others

Lantmäteriet and the Swedish Association of Local Authorities and Regions are working together on the Swedish GeoProcess project.

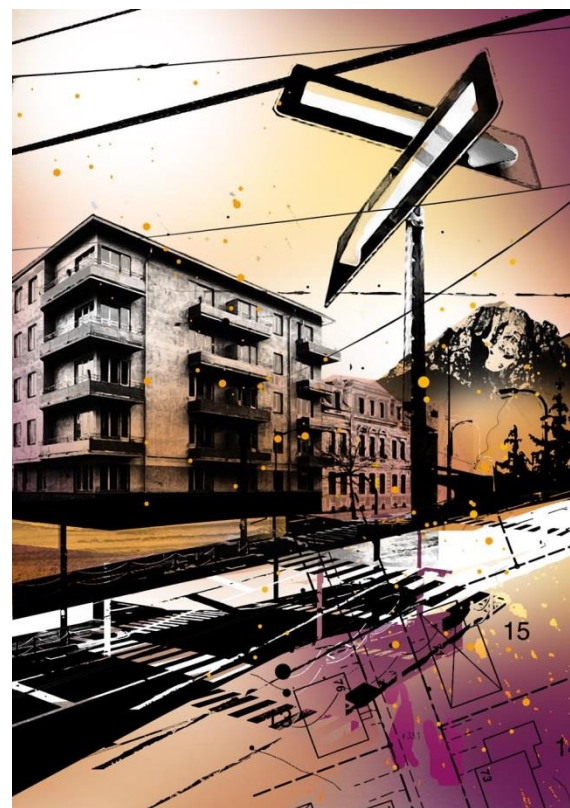
We also cooperate with:

- The Swedish Maritime Administration on national coastlines
- The Swedish Transport Administration on the national road database
- The Swedish Tax Agency on property tax
- The Swedish Meteorological and Hydrological Institute on hydrography in networks

All that happens has got a geographical connection (geodata junction)

Geodata is...

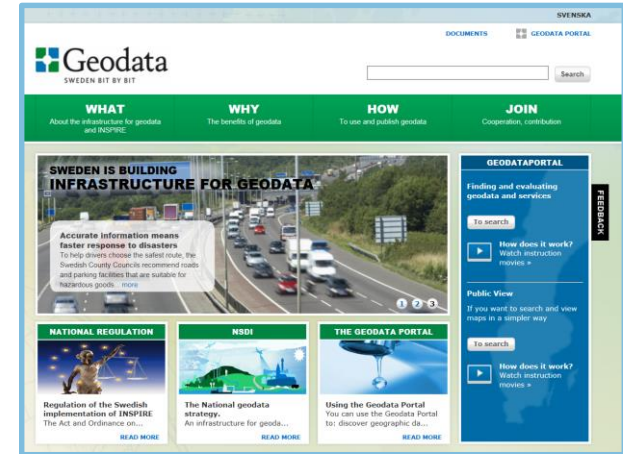
- a ground for **market economy**
- an important part of basic information for society.
- a possible way of classifying the flood of information on the internet
- a pillar in modern **information society**
- the backbone of **e-governance**
- a good driver for **cost efficiency**
- dependant of a good **infrastructure**

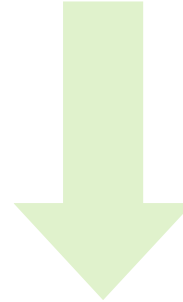




The Swedish SDI

- Gradually developed since 1970's – The Land Data Bank System was a forerunner for this
- Based on:
 - a strategy document
 - established organisation for co-ordination
 - an efficient standardisation work
 - a technical solution – the Geodata Portal
 - implementation of the Inspire Directive
 - a new model for co-operation





SDI actions are important ... they:

- Reduce costs for data collection and maintenance
- Improve data quality and consistency
- Facilitate combination of data from different sources
- Improve access to data
- Support the development of e-governance
- Support the development of GI-business

Cost efficiency by

Using the common skills within the region



More effective public administration



Simplifying access to much more data and for new areas of use

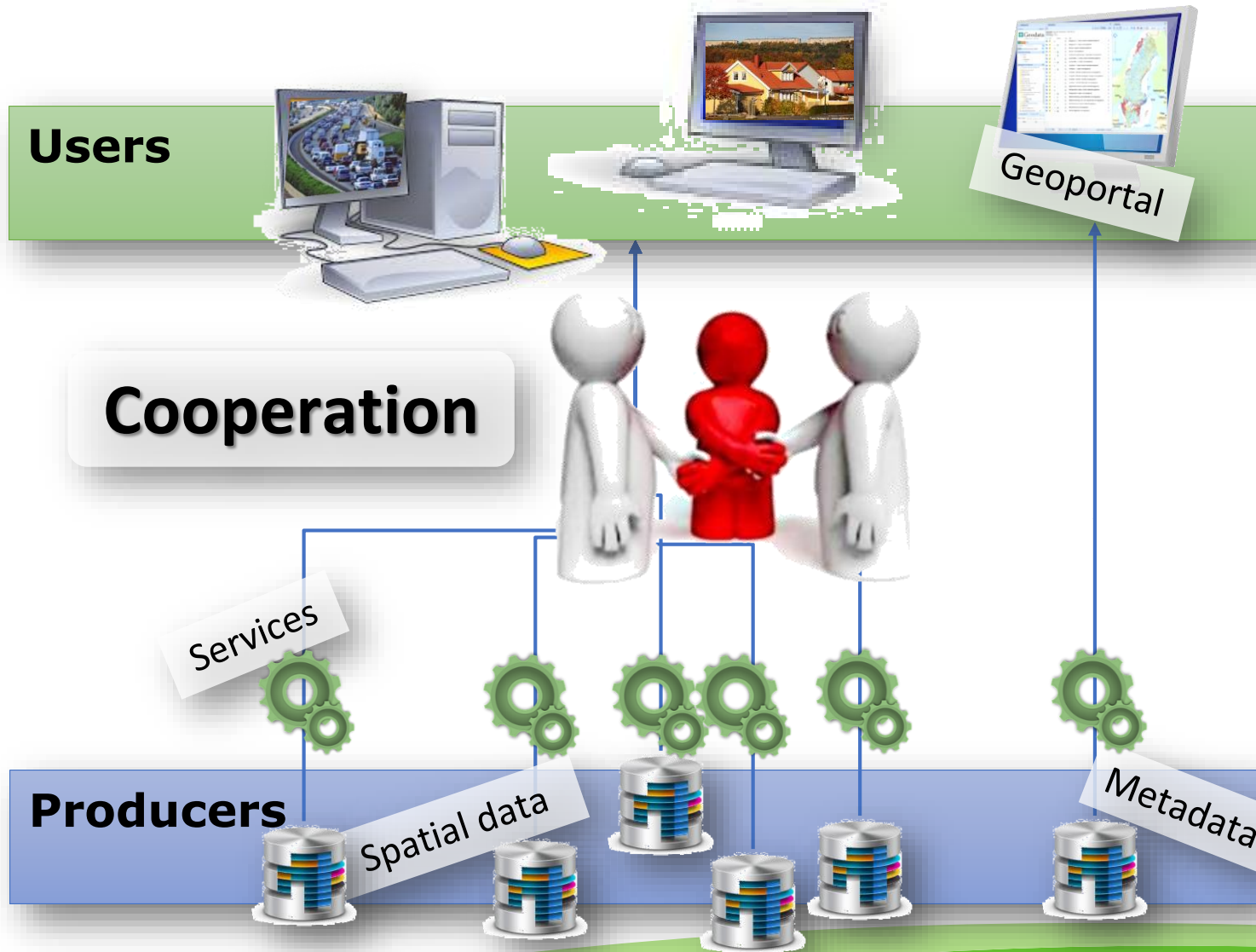


Cost efficiency by



Cooperation

How do you get a sustainable SDI?



Thank you!

Find more about Lantmäteriet and the Swedish SDI:

- www.lantmateriet.se
- www.geodata.se/en

Contact:

- Peter Wasström - email: peter.wasstrom@lm.se

