

NATIONAL AGENCY FOR CADASTRE AND LAND REGISTRATION

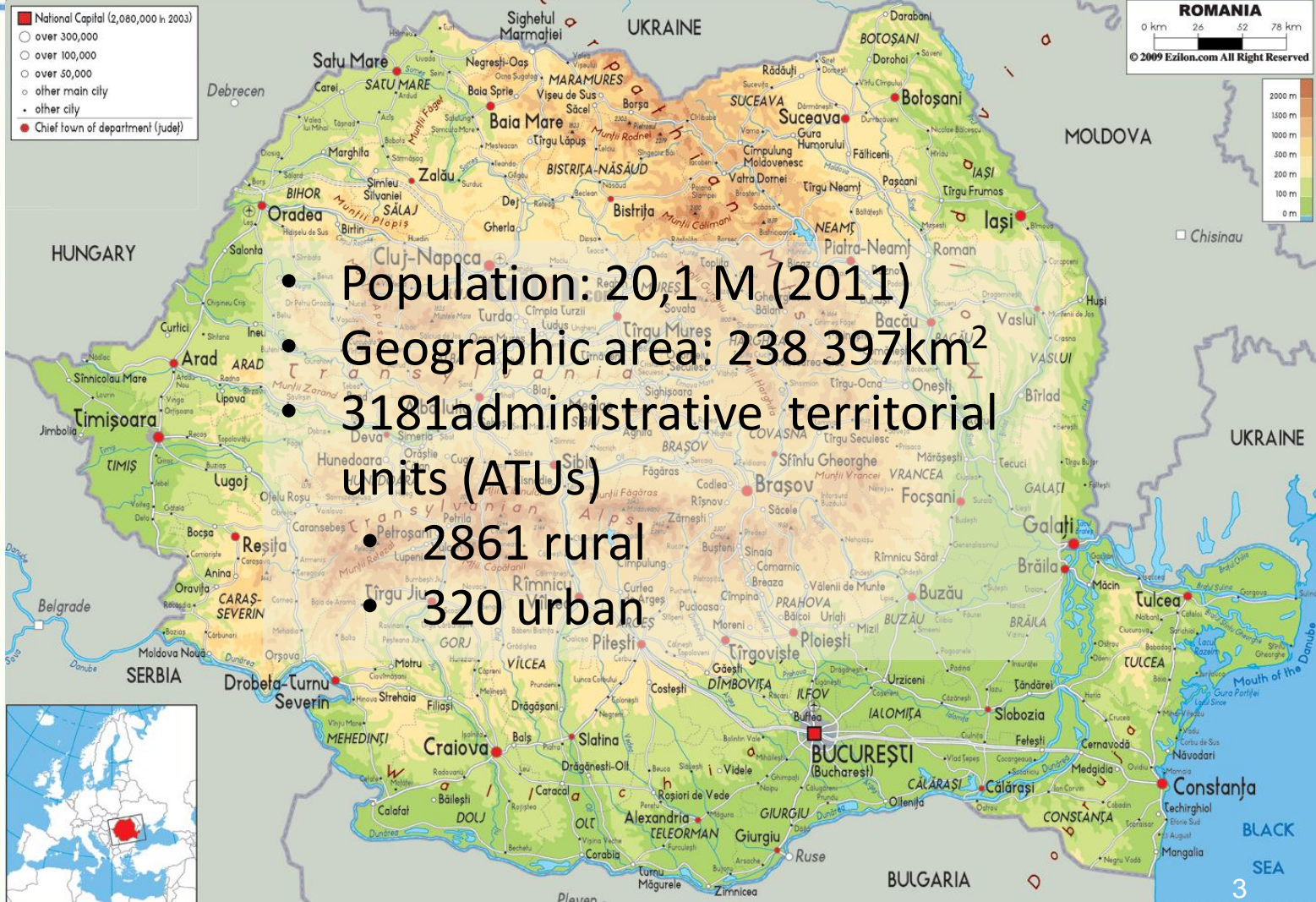


KIEV
22nd February 2018
Constantin ENE

TABLE of CONTENTS

1. Presentation of the National Agency for Cadastre and Land Registration of Romania
2. INSPIRE: transposition
3. INSPIRE: implementation
4. INIS Geo-portal

Romania



National Agency for Cadastre and Land Registration (ANCPI)

- Public institution affiliated to the Ministry of Regional Development and Public Administration
- Created in 2004 through the merger of:
 - the cadastre offices under the Ministry of Administration and Interior
 - the land book registers under the Ministry of Justice
- Self-financed organization since late 2017

National Agency for Cadastre and Land Registration (ANCPI)

Responsibilities:

- maintains cadastre and land book registers
- provides geodetic infrastructure, topographic mapping and NSDI
- Implements the INSPIRE Directive

Staff and offices:

- 2880 employees
- 42 county Offices for Cadastre and Land Registration (OCPIs)
- CNC: National Mapping Center (CNC)

ANCPI: Mandate

- ✓ The sole authority in the field of cartography, cadaster and land registration in Romania;
- ✓ ANCPI establishes the strategy within its field of activity and develops regulations within the general governmental policy;
- ✓ ANCPI insures the implementation of strategies through the subordinated institutions (OCPIs and CNC);

ANCPI: VISION

- ✓ To develop and maintain an unitary cadastre and land book system nationwide,
- ✓ To create mechanisms and procedures that are guaranteeing and protecting property rights,
- ✓ To support and contribute to the social and economical development of Romania.

- The objectives of the INSPIRE Directive are included under the European Commission's priorities set in the 2015 Strategy related to the European Single Digital Market.
- INSPIRE is relevant for the cross-sectoral interoperability in the public sector (by reviewing the European Interoperability frame)
- Principles: „exclusively digital” și „single use”

INSPIRE: Transposition

- Government Ordinance no. 4/2010 on the establishment of the National Infrastructure for Spatial Information (INIS) in Romania, republished
- Subsequent acts
 - Government Decision no. 493/2010 on the approval of the Regulation for organization and functioning of the INIS Council, with amendments and completions
 - Government Decision no. 579/2015 for the establishment of public authorities' responsibilities
 - Government Decision no. 38/2016 for the approval of the Activity Plan of the INIS Council

- Coordination structure – INIS Council
 - strategic role
 - operational role
- Groups of experts
 - selected based on professional criteria specific to spatial data themes,
 - duties, tasks and decision-making powers as to ensure their stability,
 - active and permanent participation.

Groups of Experts

Role : assist the activity of INIS Coouncil

- Expert Group "*Metadata and spatial data*"
- Expert Group „*Network featured services*”
- Expert Group “*Data sharing*”



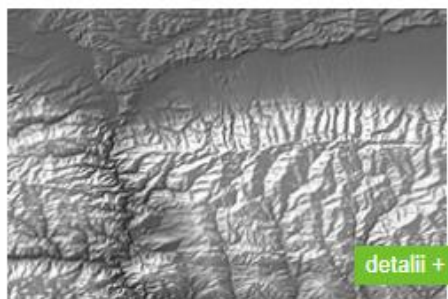

The screenshot shows the INIS Geoportal website interface. At the top, there is a navigation bar with links for HOME, SEARCH, BROWSE, and COORDINATE TRANSFORMATION. Below this is a search bar and a main content area. The main content area includes a welcome message, a news section with a list of updates, and a maps section. The news section lists several updates with dates and titles, such as '22-01-2018 Limite administrative actualizate - V32.3.143' and '06-12-2017 Limite administrative actualizate - V31'. The maps section features a map viewer and a metadata editor.

- access point - EU INSPIRE Geoportal to the national spatial data infrastructure through the registration of search service
- provides the ability to manage and publish metadata documents for INIS members
- metadata are discovered through the search service compliant with INSPIRE

Ministry of National Defence Military Topographic Department - Geoportal



<https://www.geomil.ro/>
(federated with INIS geoportal)



Digital Terrain Elevation Data
Level 1 – 2004, Geotiff



Orthoimages – RGB –
Sterographic 1970



Topographic Military Maps,
1:25.000 scale



Geographical Names
(GML INSPIRE)

- Geocatalogue - INIS Geoportal
 - List of Spatial Data Managers
 - <http://geoportal.gov.ro/Geocatalog>
 - Metadata management Application

- Viewing Applications
 - View of TopRO5, orthoimgaes – releases from 2005, 2008, 2009 and 2010-2013.



Administrative

- *Limits of administrative territorial units: counties, cities, communes*
- *intravilan limits of administrative territorial units*



Hydrography

- *Running and standing water*
- *dams*



Transportation

- *roads, street nomenclature and administrative numbers*
- *Railways and rail stations*
- *Harbors and airports*



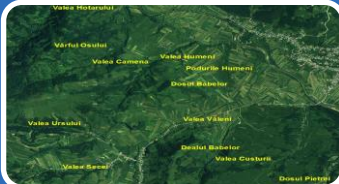
Constructions

- *buildings in urban localities*
- *Buildings in rural localities (under construction)*



Geodetic and Interest points

- *triangulation points , order I-IV / national GPS network*
- *resorts, border crossing points – on roads and railroads*
- *Points of interest for the 320 urban localities*



Geographical names

- *Toponymics – names or relief units, peaks, tops, ridges, names of forests, names of places and other apelations*



Land cover

- *All the categories of land use*

M-34-C	M-34-D	M-35-C	M-35-D
L-34-A	L-34-B	L-35-A	L-35-B
L-34-C	L-34-D	L-35-C	L-35-D
K-34-A	K-34-B	K-35-A	K-35-B

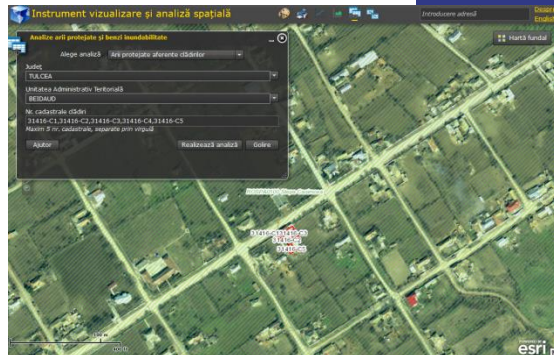
Reference systems and nomenclature specific to each scale

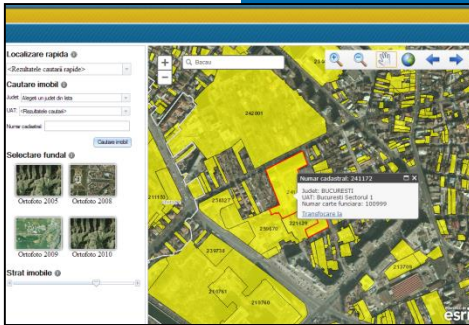
1:2.000, 1:5.000, 1:10.000, 1:25.000, 1:50.000, 1:100.000, 1:500.000, 1:1.000.000

Viewing application

- *Instruments* related to cadastre information and correlation services - spatial analysis - data from National Agency for Cadastre and Registration, National Administration "Romanian Waters" and Ministry of Environment:

- *identification of cadastral parcels and of buildings* located in a certain protected area;
- *identification of cadastral parcels* located in a certain *flooding strip*;
- for citizens – to notice *correlation errors* between postal address and related cadastral number of a parcel (immovable);
- *identification* of those immovables *that may suffer an impact* in case of certain construction works.



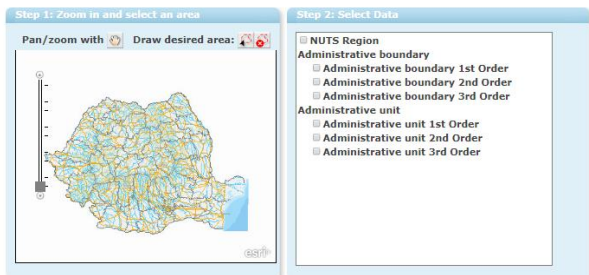


View Application for immovables

- Viewing of immovables, administrative territorial limits, orthoimages in 2005, 2008, 2009, 2010, 2012 releases

HOME SEARCH BROWSE ADMINISTRATION DOWNLOAD COORDINATE TRANSFORMATION

Download



Download Application

Allows downloading of ATUs limits in various formats;

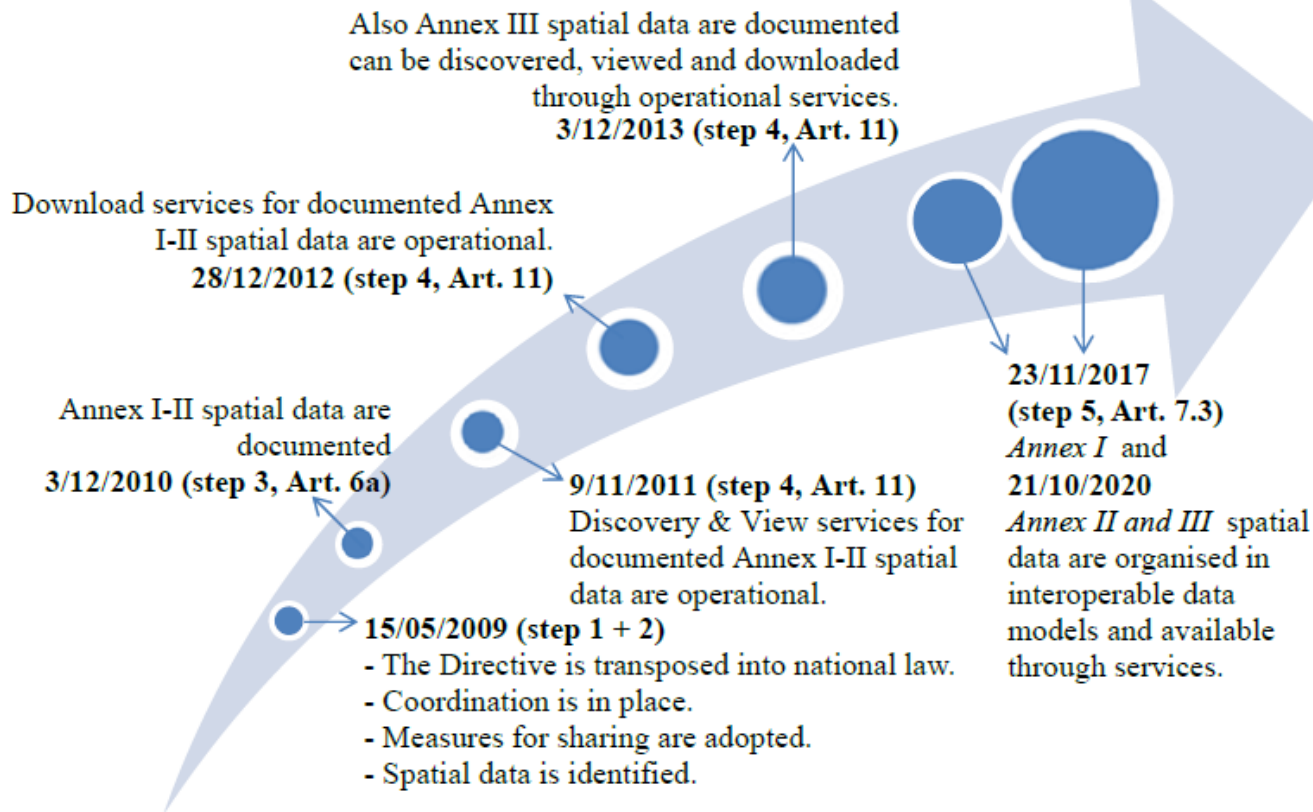
Ministry of Environment

INSPIRE pune natura pe harta ta
- Date spațiale pentru arile naturale protejate -

„Realizarea de seturi de date spațiale în conformitate cu specificațiile tehnice INSPIRE pentru arile naturale protejate, inclusiv a siturilor Natura 2000, având în vedere optimizarea facilităților de administrare a acestora”



Acquiring spatial datasets in line with INSPIRE technical specifications for protected natural areas, including Natura 2000 sites, in view of optimizing their management facilities.



Difficulties

- ✓ Lack of specialised staff
- ✓ Non-allocation of funds needed to achieve specific objectives and activities
- ✓ Failure to meet implementation deadlines
- ✓ Need to involve decision-makers in the work of the INIS Council
- ✓ Lack of national data policies

- Strengthening institutional capacity by investing in human and tangible resources;
- Interoperability –the obligation of activity managers to provide access to data and services in a unified and standardized context;
- Data Sharing and sharing data - avoiding data duplication and multiple funding for creating them;
- accessing European funds that can help develop solutions and tools which can be used by all public authorities (reusable components) that can improve efficiency across multiple domains.



Thank you!