

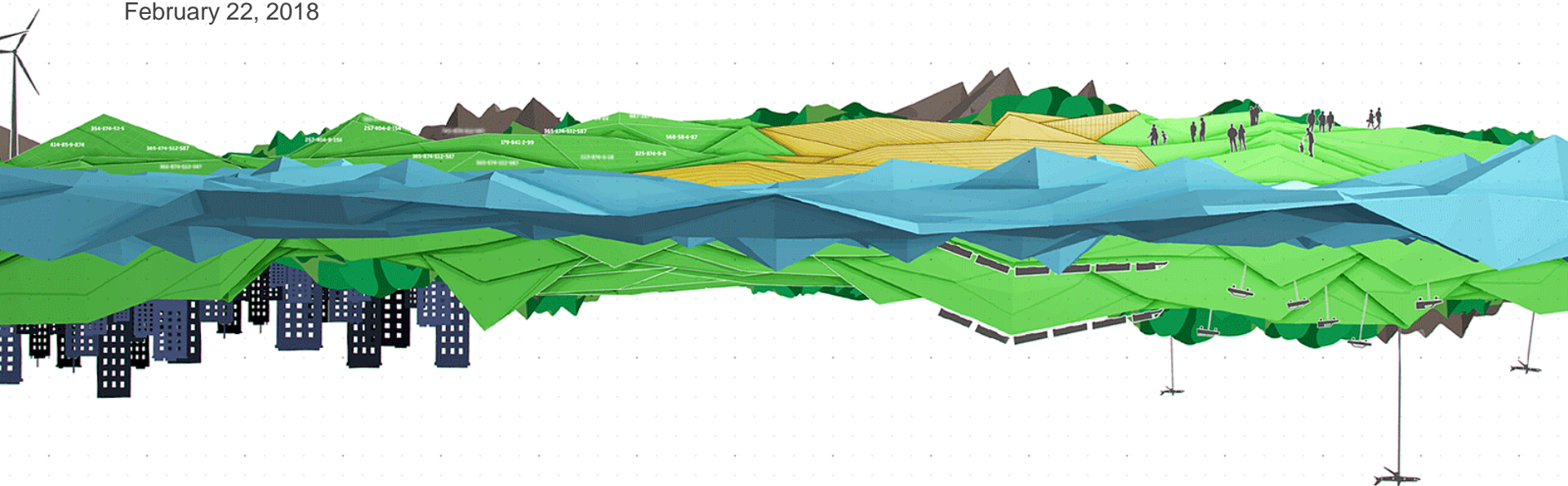
POLICY REPORT ON SPATIAL INFRASTRUCTURE IN FINLAND

COORDINATES FOR DEVELOPMENT

Pekka Halme

Director of Strategic Development, National Land Survey of Finland

February 22, 2018



The National Land Survey

- Founded 1812
- Under the Ministry of Agriculture and Forestry
- Cadastre, Land register, Mapping, Spatial Data Research
- Net-budgeted government agency
- 1760 staff
- Expenses 137 M€ (2016)
- Income 92 M€ (2016)



Where Did the Idea Come from?

- The effect and importance had been discussed in the NLS since some years.
- The Ministry of Agriculture and Forestry endorsed the idea and prepared it for wider discussion.
- The idea of such a report gained support and the process was started in 2017.



The Goals of the Report

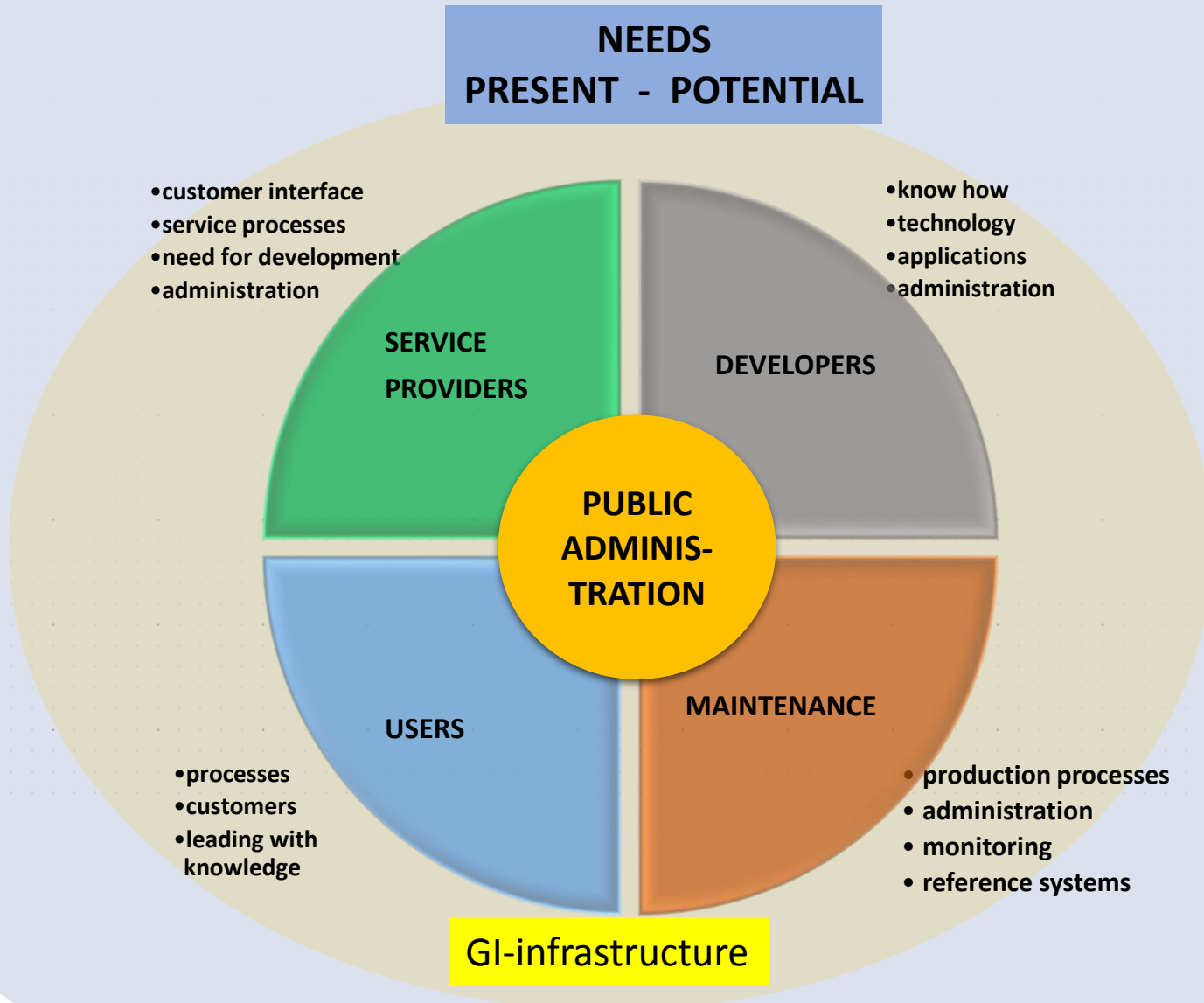
A vision of spatial data functions in public administration

1. The opinions of those who produce, use and refine spatial data on how the Spatial Data Infrastructure in Finland should look at its best.
2. In addition to the full picture, what the public administration's part in the whole vision should be.
3. A view on how the public administration's part should be put into practice.

Timescale, about 8 years.

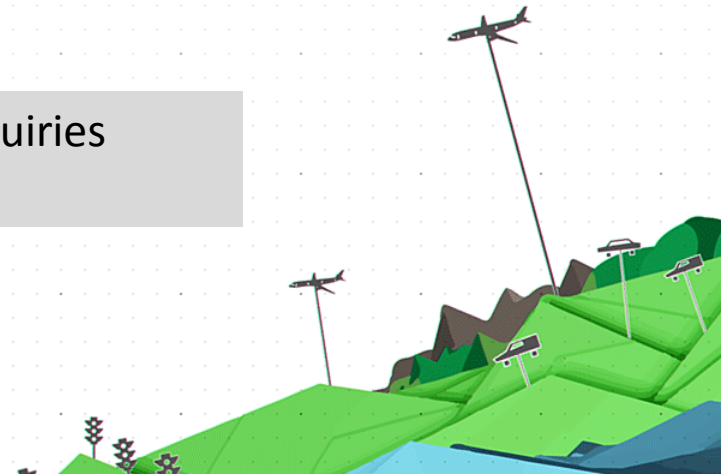
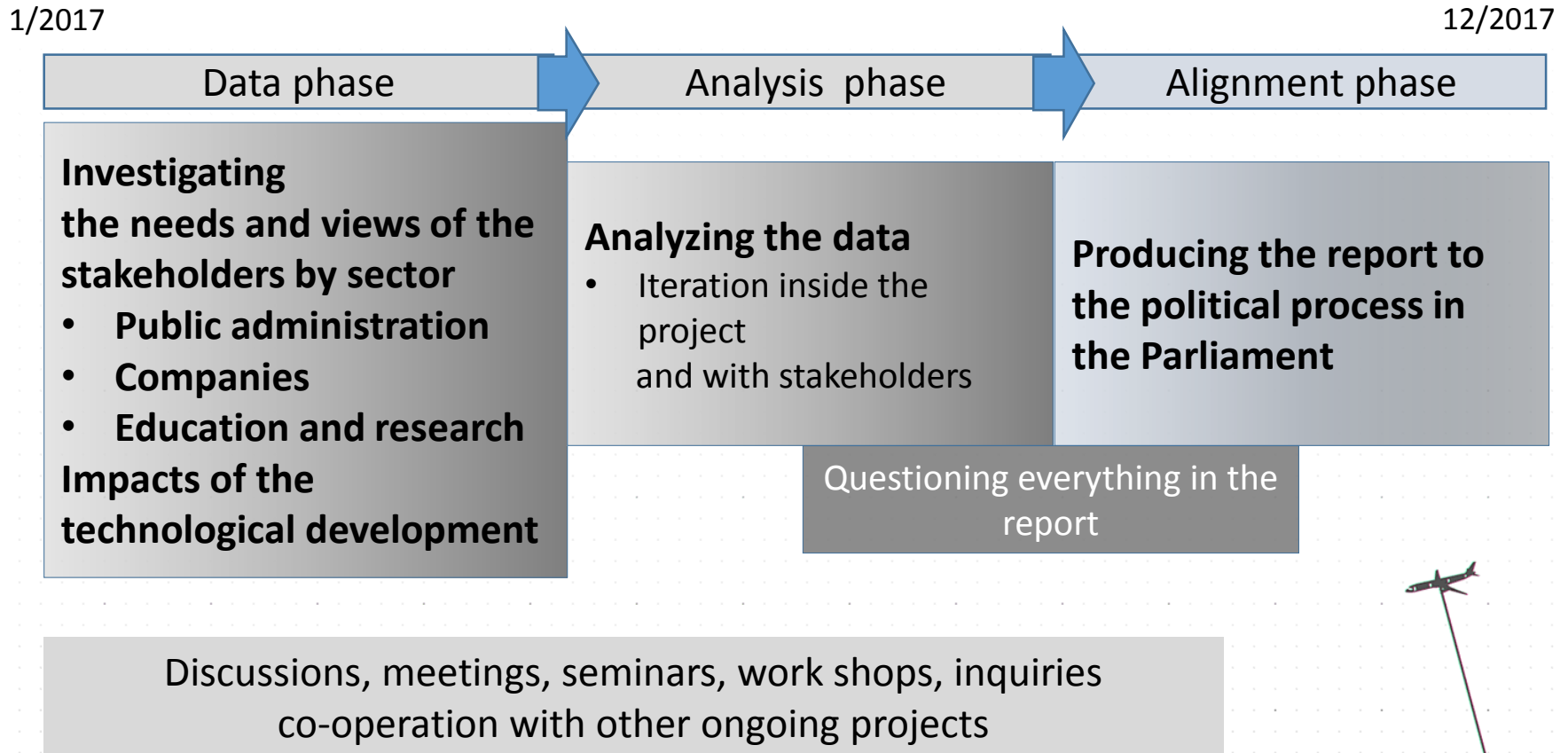


POINTS OF VIEW

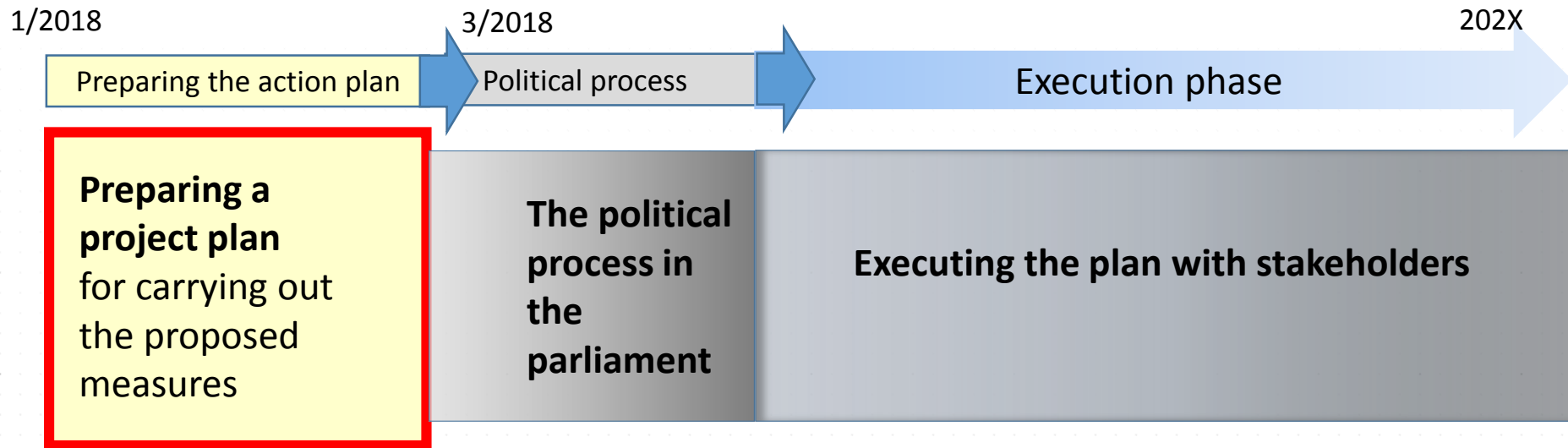


International GI-infrastructure

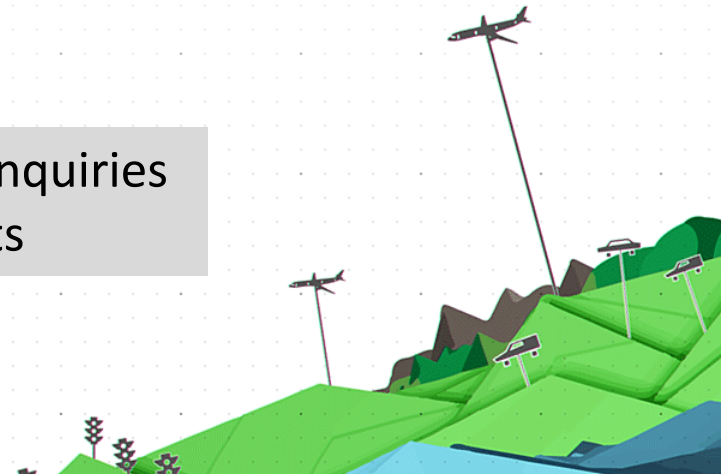
Phases of the Project 1



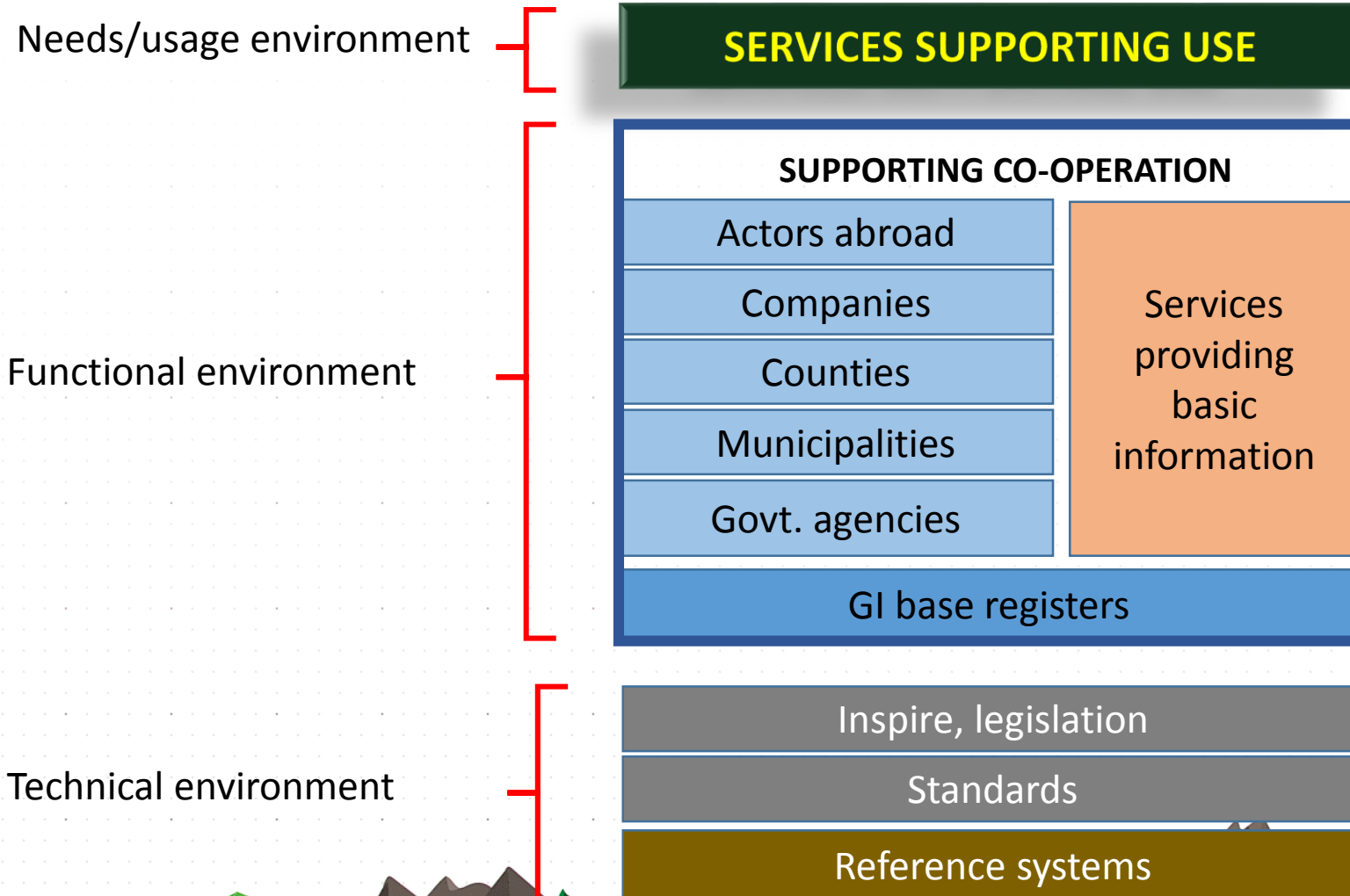
Phases of the Project 2



Discussions, meetings, seminars, work shops, inquiries
co-operation with other ongoing projects



Everything Will Be Considered



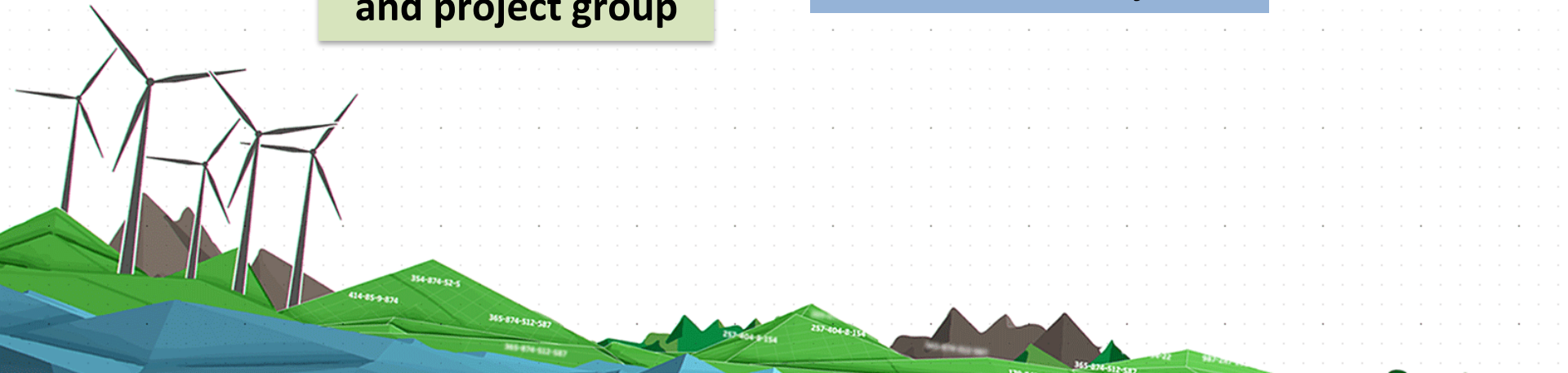
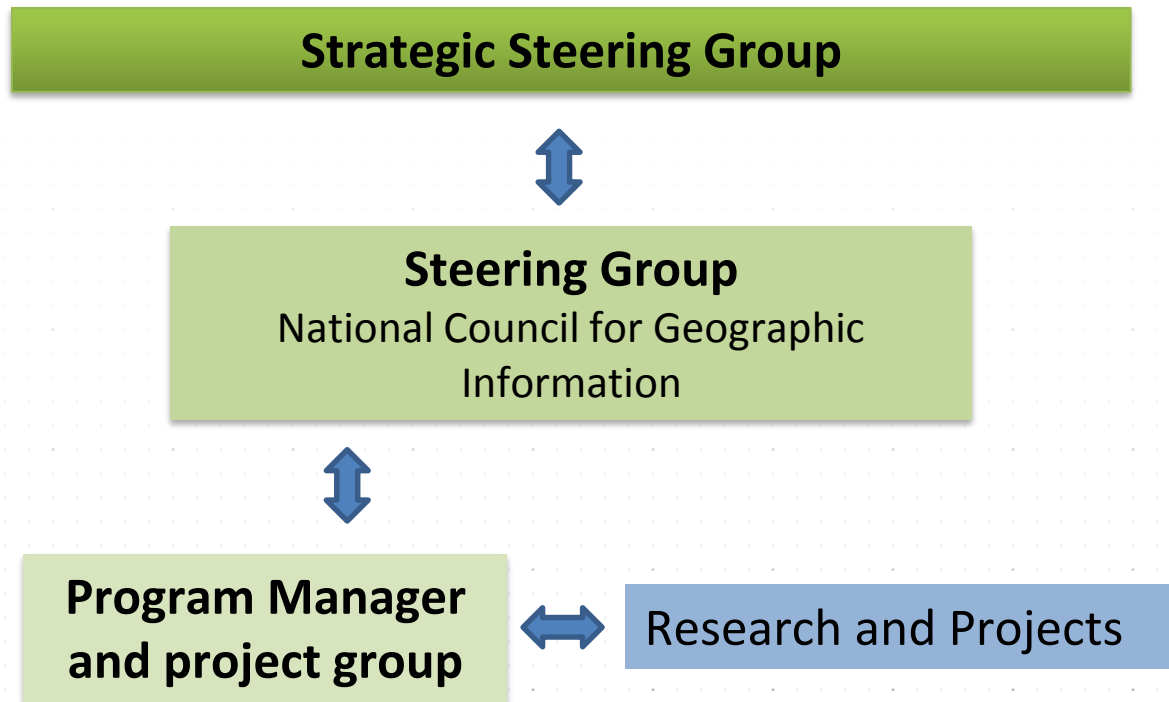
Execution

- Co-operation with other ongoing projects
- Project aims at realizing the goals of the digitalization program of the government within the GI field
- During the analysis phase it will be decided if the final report will be
 - description of the target situation
 - implementation plan

Preliminary goal to hand over the report to the Parliament in spring 2018



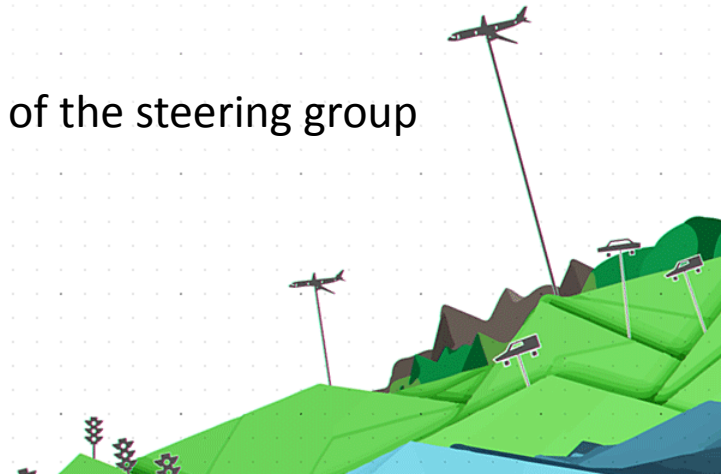
Actors



Strategic Steering Group

- National Land Survey (Chair)
- Ministry of Agriculture and Forestry
- Ministry of Finance
- Ministry of Interior
- Ministry of Economic Affairs and Employment
- Association of Finnish Local and Regional Authorities
- Ministry of Environment
- Ministry of Social Affairs and Health
- Ministry of Transport and Communications
- Ministry of Defense

Program Manager as permanent expert and secretary of the steering group



KIITOS

More information: <http://mmm.fi/paikkatietoselonteko>

POLICY REPORT ON SPATIAL INFRASTRUCTURE IN FINLAND - COORDINATES FOR DEVELOPMENT

